

DATA SHEET



1-Port USB 2.0 Over Cat6 Wall Plate to Box Extender - up to 150ft (TAA Compliant)

Extend USB 2.0 signals for a single USB device up to 150 feet over a single Cat6 cable

OVERVIEW

The 1-Port USB 2.0 Over Cat6 Wall Plate to Box Extender is a perfect solution for conference rooms and huddle spaces in need of an innovatively simple, yet powerful solution for extending USB signals beyond their native 16.4 foot length limitation.

Plug and play installation is quick and easy with no software or drivers required. Reduce cable clutter by running a single Cat5 or Cat6 cable to a remote location, or for added convenience, use existing in-wall Cat5/Cat6 cabling to extend USB connections between rooms.

Using USB 2.0 speed and power, this solution provides increased bandwidth and faster data transfer speeds, up to 480Mbps, at lengths up to 150ft. The included 5V/2A DC power supply provides enough power to operate most new USB devices and allows for flexibility in equipment placement.

FEATURES

- Supports High-Speed USB devices up to 480Mbps
- Extends a USB connection up to 150ft
- Suspend/resume detection
- Hot pluggable
- Plug and play, with no software or drivers required

ITEM DESCRIPTION

54289 1-Port USB 2.0 Over Cat6 Wall Plate to Box Extender - up to 150ft (TAA Compliant)

DATA SHEET

SPECIFICATIONS:

1-Port USB 2.0 Over Cat6 Wall Plate to Box Extender - up to 150ft (TAA Compliant)

SIGNAL SPECIFICATIONS:

- Signal Type: USB 2.0
- Max. Data Rate: 480 Mbps

ELECTRICAL SPECIFICATIONS:

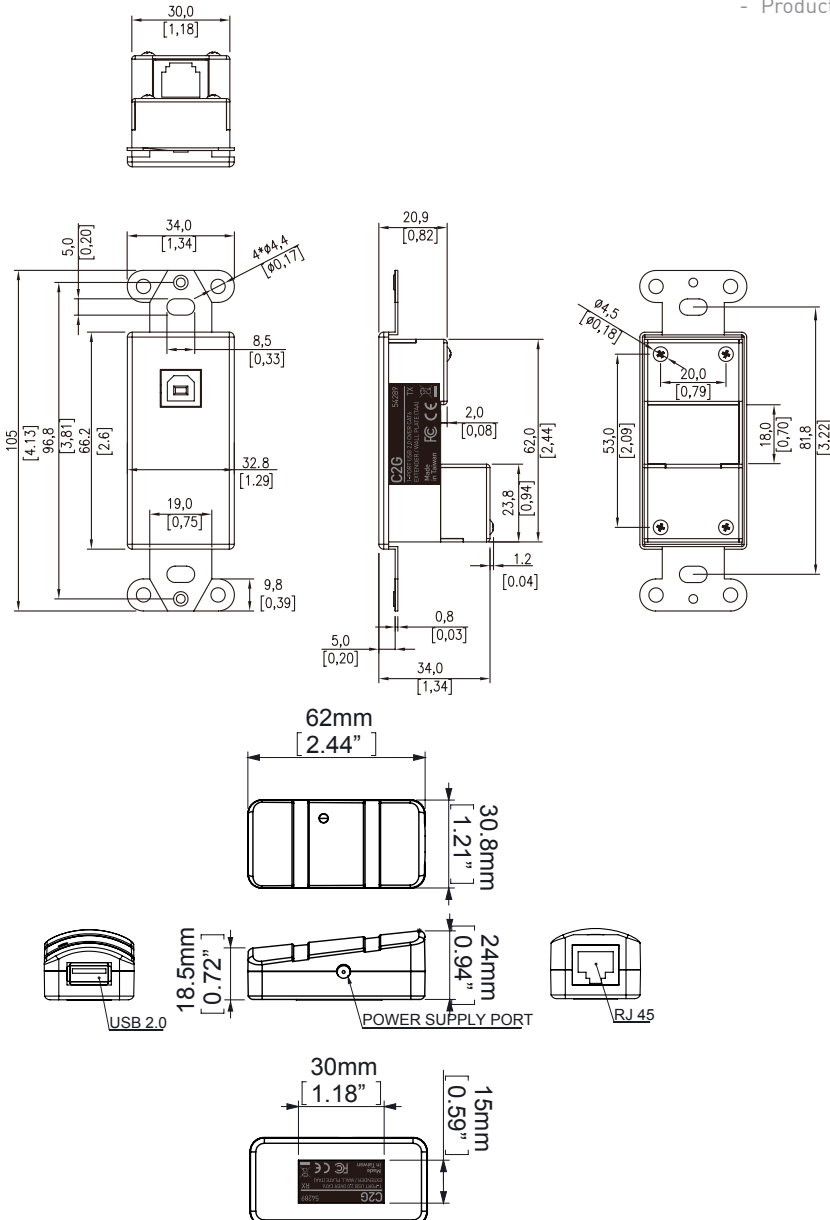
- Chipset: Lontium; LT8311
- Input Power: 100-240VAC; 50-60Hz
- Power Supply: 5V DC; 2A

PHYSICAL SPECIFICATIONS:

- Operating Temperature: 0°C to +40°C (Non-Condensing)
- Storage Temperature: -20°C to +80°C

PHYSICAL CHARACTERISTICS:

- Connector 1: DC Jack: Housing: PBT UL94V-0; Black; Pin: HPB; MB: Ni / Ag; OD ϕ 1.3mm
- Connector 2: USB Type A Female: Terminal: Brass G/F in Mating Area; Shell: SPCC Ni over Cu; Insulator: PBT White
- Connector 3: USB Type B Female: Terminal: Brass G/F in Mating Area; Shell: SPCC Ni over Cu; Insulator: PBT White
- Connector 4: RJ45: 8P8C Right Angle Type; Housing: Glass Filled Polyester UL94V-0; Black; Shielding: 0.2mm Thick Copper Alloy; Tin Plated; Contact: Thick Alloy; C5210 Selective Gold Plating
- Material: TX-Faceplate: Metal; White; Back Shell: Metal; Black; RX: ABS; Black
- Dimensions: TX-Faceplate: 34x34x105mm; RX: 62x30.8x24mm (LxWxH)
- Product is CE marked and conforms to 2015/863/EU RoHS



C2G
A brand of **legrand**

6500 Poe Ave.
Dayton, OH 45414
Phone: 800.CABL.911
www.c2g.com

Follow Us

